

# Warrington

## Community Safety Partnership Plan 2024 to 2027

*“Committed to keeping Warrington a Safe Place to live, work and visit”*

## Contents

About Warrington CSP .....	4
Looking back over 2023 .....	5
Key Activities Delivered Year 3: 2023 .....	8
Key performance indicators.....	9
Ward Crime and ASB rates .....	10
Looking forward our 2024-2027 priorities .....	11
Looking forward - what we will do and how we will measure progress .....	12

I am pleased to introduce our new 3 year Community Safety Partnership Plan which builds on the strong partnership working to reduce crime levels, respond to emerging threats and ensure that we work to safeguard and protect our communities and vulnerable people.

Overall, recorded crime continues on a downward trend. There have been legislative changes to crime recording rules in 2023 which has affected true comparisons of certain crime types. Additional legislative changes include the Serious Violence Duty, which is a statutory requirement for Community Safety Partnerships to assess Serious Violence and produce a Strategy. As such, we have been working with the Cheshire Police & Crime Commissioner and partners in developing a joint needs assessment, resulting in the publication of a Serious Violence Strategy for Cheshire. The Serious Violence Delivery Plan 2024-25 has been produced identifying priorities and interventions.



Sadly, we know that educational programmes need to be targeted to a younger audience and Warrington Councils' Community Safety team on behalf of the partnership have delivered age-appropriate sessions to Year 6, with our Early Help Team, tackling issues of ASB, Knife Crime, Exploitations. The feedback so far has been extremely positive with many primary schools across the town accessing the workshops. The Serious Violence Delivery Plan will build upon the work to deter children and young people away from the criminal justice system and being vulnerable to exploitation.

The draft Terrorism (Protection of Premises) Bill known as 'Martyn's Law' will require those responsible for publicly accessible venues to take steps to reduce the threat to the public from terrorist attacks in a proportionate manner. Further public consultation on The Bill was carried out in March 2024. Preparations have been underway to understand the impacts and requirements for partners on implementing the legislation. The Criminal Justice Bill will look to make amendments to criminal law and the powers of police in dealing with offenders, serious organized crime, and other provisions to prevent crime and disorder - begging, rough sleeping and anti-social behaviour. We have been reviewing our ASB procedures to ensure alignment with statutory guidance and the Government's ASB Action Plan.

Warrington has benefited from Home Office funding provided to Cheshire under the annual Safer Street Schemes, this has resulted in a variety of work across the Town Centre, improving CCTV coverage, monitoring facilities and environmental works.

Through this funding and CSP grant allocation, the town benefits from 5 redeployable CCTV Cameras which has been successful in reducing ASB and deterring crime in key hotspot areas. There have been partnership projects across the town engaging with young people in hotspot areas through the successful mini stay safe projects and the graffiti art project at the underpass near Warrington Youth Zone.

**Theresa Whitfield, Head of Chief Executives Office, Warrington  
Borough Council, Chair of Warrington Community Safety Partnership**

## About Warrington CSP

### 'Living Well in Warrington' - the Health and Wellbeing Strategy for Warrington 2024 – 2028



The Strategy sets out a number of Priorities and Ambitions to achieve Warrington's partnership vision of *"Warrington is a place where we work together to create stronger neighbourhoods, healthier people and greater equality across all our communities"*.

The Community Safety Partnership are committed to supporting the Strategy, specifically:

- We work together to safeguard and support the most vulnerable.
- There are lower levels of crime, people feel safe and are not subjected to hate crime because of their ethnicity, religion, disability, sexual orientation or gender expression.

### What is the Community Safety Partnership (CSP)?

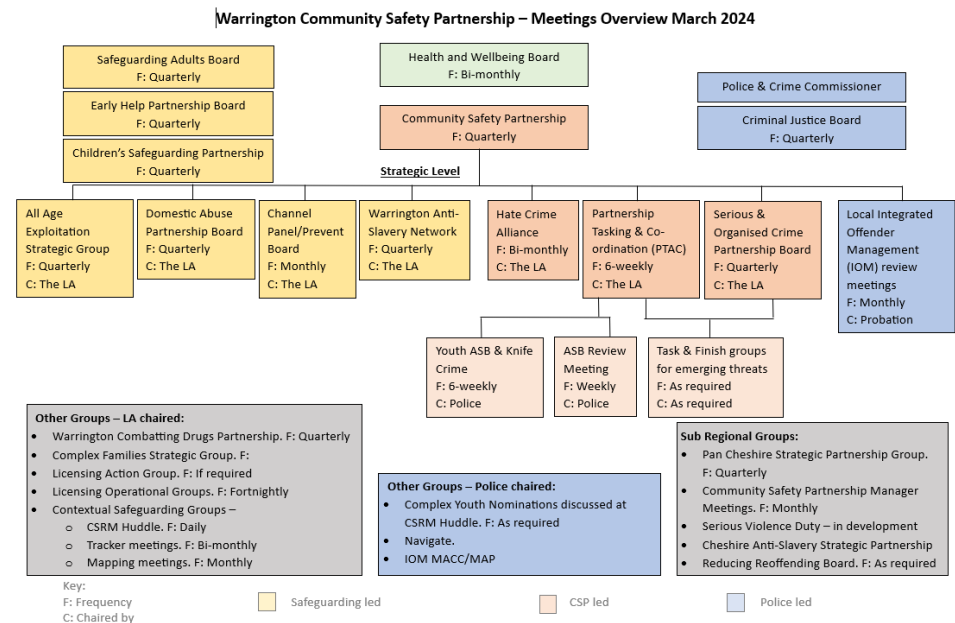
Warrington is one of 4 local authorities and forms one of nine local policing units within the Cheshire Police area and our CSP priorities are aligned with that of the Police & Crime Commissioner for Cheshire.

The CSP is the local multi-agency partnership that has been established to tackle community safety issues within Warrington. It has a statutory obligation under the Crime and Disorder Act 1998 (and subsequent legislation) to work in partnership to assess and address issues of:

- Crime and disorder
- Anti-social behaviour
- Reducing re-offending
- Combatting the misuse of drugs, alcohol and other substances
- Preventing people from becoming involved in serious violence
- Reducing instances of serious violence

The partnership meets 4 times a year and is supported by a range of groups as shown opposite. Along with other supporting partner agencies, some of the key organisations that make up the CSP include:

- Warrington Borough Council
- Cheshire Constabulary
- Cheshire Fire and Rescue Service
- NHS Cheshire & Merseyside
- Warrington Public Health
- Youth Justices Service
- NW National Probation Service



The CSP has a statutory duty to outline the Partnership priorities and delivery plans, which are determined by a statutory annual Community Safety Strategic Assessment; this is completed locally. The overall purpose is to 'add value' to the work already being carried out by the separate partner organisations.

## Looking back over 2021-2024

Warrington Community Safety Partnership (CSP) saw a 10% reduction in overall crime volumes in 2023, totaling 15,848 offences recorded – a reduction of 1,730 offences when compared with 2022. In comparison to the other CSP's within the Cheshire Constabulary area, Warrington saw the largest reduction in 2023. It is important to note that Legislative changes introduced in 2023 impacted on crime recording rules, thereby affecting the increase and decrease of some crime types.

For the year ending June 2023, Warrington was lower than average from all crime when compared with our Most Similar Groups. The highest crime rates per 1,000 population are still within the inner areas of Warrington (Bewsey and Whitecross which includes the Town Centre; Fairfield and Howley) and the north of Warrington (Orford).

The changes in police recording accounted for most, if not all, of the reduction of 30% in Police recorded Public Order Offences. In contrast the volume of Public Order incidents in 2023 increased by 3% (32 more incidents) when compared to 2022. The Public Order incident rate per 1,000 population (4.8) for Warrington is slightly lower than that of the Force (5.0). A review of Public Order incidents indicates that increases are due to a higher volume of Bail Breaches / Wanted Persons / Breach of Court Order incidents (+54) which is in line with the national change to increase the use of Bail rather than Released Under Investigation.

Overall volumes of Police ASB incidents across Warrington CSP have reduced by 17% (-393 incidents) in 2023, this reduction being the largest across all 4 CSP's. ASB rates per 1,000 population for 2023 (9.4) have fallen by 1.9 when compared

to the previous year (11.3) and are lower than Force rates (10.1). Bewsey and Whitecross (Inc. Town Centre Beat) is the most affected area (30.6 incidents per 1,000 population), followed by Latchford East (12.8 incidents per 1,000 population); Poplars and Hulme (12.4 incidents per 1,000 population); Fairfield and Howley (11.5 incidents per 1,000 population) and Birchwood (10.2 incidents per 1,000 population). Whilst Police ASB incidents have decreased in the last year, ASB reports made to the WBC Community Safety Team have increased by 34% in 2023. There were 291 reports in this period compared to 217 reports in 2022 and are often complex cases.

Criminal Damage and Arson Offence volumes in 2023 have fallen by 6% (-80 offences) when compared to 2022 thus continuing the decreasing trend over the past 5 years.

Secondary Deliberate fires saw a notable reduction. As per the previous year, three areas seem to be the prevalent areas of concern where younger members of the community are believed to be setting fires in the up and coming summer months. These fires are predominantly occurring in months between May and August. Warrington's Partnership Tactical & Co-ordination Group continue to work together to combat ASB.

Warrington CSP has experienced a small decrease (-3%, 17 fewer offences) in the volume of recorded Hate crimes in 2023 (474) compared to 2022 (489). Despite this decrease the crime rate in Warrington (2.2) is higher than that seen across Cheshire Constabulary as a whole (1.9) with 22% of all Hate Crime across Cheshire in 2023 occurring in Warrington CSP. Racial' Hate Crimes are the most frequent issue in each of the Beat Team Clusters. A Cheshire Constabulary Hate

Crime Strategy 2023-2026 is in place.

Bicycle Thefts have seen a reduction of 19% reduction (-51 offences) in 2023 (217 offences). Bike thefts did see an increase in 2022 (273 offences), but volumes remain much lower than the offences recorded in 2019 (468 offences). Targeting of offenders and bike marking initiatives continue.

Shoplifting offences in 2023 have increased by 39% in Warrington CSP (1,009 offences compared to 727 in 2022), these volumes having increased to be back in line with 2020 levels (1,028 offences), which being a COVID year meant that lower volumes were expected due to the lockdowns in place. The increase in Shoplifting offences in Warrington mirrors the trend seen across the Force (+32%) with Warrington CSP showing the second largest increase when compared to the 4 CSP's, this increase being projected due to the cost of living crisis.

For 2023, Warrington CSP saw a 12% decrease in recorded crime within the group of Violence against the Person<sup>1</sup> (6,973 offences in 2023, 978 less offences from 2022). Most Similar Group comparison shows Warrington CSP for Violence (& Sexual) offences are 5<sup>th</sup> highest out of 15 for the year ending June 2023, with Warrington's crime rate (40.24) being higher than the MSG average (36.43). Warrington's rate of 33.1 sits slightly above the Force's rate of 32.6.

A total of 155 offences of Possession of Weapons were recorded across Warrington in 2023, that is a 21% increase and a total of 27 more offences. This increase is less than what was seen across the 4 CSP's. Warrington remains lower

than average when compared to its Most Similar Groups.

---

<sup>1</sup> Violence With Injury and Violence Without Injury are subcategories of Violence Against the Person

**Community Safety In Warrington – Facts & Figures:** (Findings from the strategic assessment for the period January to December 2022 or latest data)



**15,848** Crimes Committed (that is 75.1 crimes per 1,000 residents)

2,930 Domestic Abuse offences



584 malicious communication offences



317 Bike thefts

52% increase in drug offences

Shoplifting increase by 39%

21% increase in possession of weapon offences

5% increase theft from a motor vehicle

2023 V 2022

Deliberate Fire reduced by 19.3%

19% Reduction in bike theft

13% Reduction in Cyber Crime

10% Reduction in Knife Crime

7% reduction in Domestic Abuse Crimes



Substance misuse services NDTMS Data (18+) – number in treatment:  
435 Alcohol users  
140 Non opiate only  
500 Opiate users  
190 Non-opiate

1,403 Alcohol related crimes and 753 drug offences



1,981 incidents of anti-social behaviour (ASB) that is 9.4 per 1,000 residents



997 fly-tipping reports



154 Parent Alert Letters Issued to tackle Youth ASB



151 deliberate fires

## Key Activities Delivered 2021 - 2023

Preventing and responding to crime and people feel safe	Anti-social behaviour & public order	Domestic Abuse, Stalking and Sexual Offences	Protecting our communities from harm
Increased level of referrals to substance misuse services via test on arrest, which was a CSP priority task	WBC Community Safety rolled out training to partnership agencies and Head Teachers Conference – improving links in addressing Youth ASB.	Warrington's Authentic Voice model held as best practice and included in the SaveLives National toolkit.	Partnership work with the England Illegal Money Lending Team. 'Stop Loan Sharks', awareness raising training was carried out.
A Task and finish group with WBC Community Safety, Public Protection and Cheshire Police met. This resulted in 40 retailer visits (16 within the Town Centre and 24 in outer areas) to review knife issues related to display and sale of knives.	The Partnership now have 5 Operational PTAC Redeployable CCTV cameras for hotspot monitoring and disruption and these are proving an effective disruption tool. CCTV evidence has also been used supporting a successful prosecution.	Developed and mobilised a football/WRC campaign, which included working with Licensing colleagues, to distribute stickers in 300 taxis, licensed venues hosting England matches, and mobilised resource to local hospital/GP Services.	Partnership visits to concerns/ reports related to Waterways Safety during periods of warm weather and frozen conditions.
Provision and distribution of additional 'knife savers' bleeding control kits, with guides to youth venues.	Successful 'Stay Safe' partnership working With Early Help and Warrington Police, at youth ASB hotspot areas.	Provision of rapid screening spiking test cups for use in the nighttime economy.	The provision of a coordinated programme to schools on subjects such as ASB, county lines and exploitation.
Work of the Cheshire Cybercrime Unit within the Cheshire area to help promote key safety messages.	Dog Control Public Space Protection Order (PSPO) consultation completed in 2023, order to commence in 2024	Ask for Ani / safe spaces locations - 6 <sup>2</sup> across Warrington pharmacies and the job centre.	Continual workforce development across the partnership for training relating to county lines, cuckooing and criminal exploitation. Lunch & Learn sessions
County Lines / Knife crime plays have taken place in schools across the Borough and a knife crime first aid video was commissioned and filmed in Warrington.	A new Youth Criminal Behaviour Order Protocol was developed as part of the partnership ASB management arrangements.	Pan Cheshire Safe and Together Launch in September 2022 hosted by Warrington. Warrington has 26 Champions, who can also deliver short briefings sessions.	Childhood Exploitation – OPCC commissioned/CSP funded Educational Mentor Programme to reduce serious violence in young people.
Landlord engagement project around WBC Bin Policy and manage of their waste and reduce fly tipping	Partners have worked together to create 'Would you risk it?'. A new interactive ASB & risk-taking behaviour awareness programme, for Year 6, as they transition to High School.		Ask Angela Campaign operates within the Borough for anyone feeling vulnerable in pubs or clubs using a code phrase to alert staff

<sup>2</sup> At the time of plan development



## Key performance indicators

Crime/Incident	2019	2020	2021	2022	2023	2023 rate	2024 – 2027 aims	Cheshire Rate <sup>3</sup>	England & Wales rate <sup>4</sup>	Most Similar Group Comparison – YE Sept 23
All Recorded Crime	20,182	18,032	17,649	17,578	15,848	75.1	Maintain/Reduce	73.5	92.0	Same as average
Drug Offences	400	385	344	495	753	3.6	Maintain	2.9	3.0	Higher than average
Violence against the person	7,666	7,858	8,006	7,951	6,973	33.1	Reduce	32.6	34.0	Violence and sexual offences: Same as average
Sexual Offences	679	648	705	756	728	3.4	Maintain / Reduce	3.3	3.0	
Possession of weapons	110	67	52	128	155	0.7	Maintain / Reduce	0.5	1.0	Same as average
Knife crime <sup>5</sup>	79	87	108	134	120	0.6	Reduce	0.5	-	-
Domestic Abuse crimes	3,411	3,508	3,225	3,162	2,930	13.9	Increase reporting	14.2	-	-
Burglary	1,028	734	674	612	522	5.8	Maintain	6.3	5.0	Lower than average
Theft from a motor vehicle	520	428	390	326	342	1.6	Maintain	1.2	3.0	Vehicle Crime: Lower than average
Theft of a motor vehicle	297	197	213	267	256	1.2	Maintain	0.9	2.0	
Shoplifting	1,275	1,028	750	727	1,009	4.8	Maintain/Reduce	5.4	7.0	Lower than average
Bicycle theft	468	318	207	268	217	1.0	Maintain/Reduce	0.9	1.0	Same as average
Hate Crimes	441	445	551	491	474	2.2	Maintain / Increase reporting	1.9	2.4 <sup>6</sup>	-
ASB	4,065	5,311	3,803	2,374	1,981	9.4	Reduce	10.1	16.4 <sup>7</sup>	-
ASB environmental (police)	159	317	270	162	125	0.6	Maintain/Reduce	0.6	-	-
WBC Fly tipping	-	-	1,429	1,073	997	-		-	-	
Public order	3,346	2,917	2,913	2,614	1,821 <sup>8</sup>	8.6	Reduce	8.6	10.0	Higher than average
Criminal Damage & Arson	2,012	1,692	1,536	1,364	1,284	6.1	Maintain/Reduce	6.2	9.0	Lower than average
Deliberate fire activity	266	246	197	187	151	0.7	Maintain/Reduce	0.8	-	-
First time entrants - Youth Justice system	23	23	27	21	22 <sup>9</sup>	-	Maintain	-		-
Average IOM Cohort offenders	-	44	37	38	40	-	Maintain/Increase	-	-	-

<sup>3</sup> Rates from Cheshire Constabulary for Warrington and CP Force rate, YE December 2023,

<sup>4</sup> England & Wales Rates from ONS (excludes fraud) police force data tables, YE Sept 23

<sup>5</sup> Knife crime - Home Office definition of a Knife Crime. (Use of knives and other sharp instruments) this includes Violent and Sexual Offences only.

<sup>6</sup> England and Wales Hate crime volume YE March 2023, converted using ONS E&W Population mid 2022 to identify rate per 1,000)

<sup>7</sup> England and Wales ASB police volume YE Sept 2023, converted using ONS E&W Population mid 2022 to identify rate per 1,000 population)

<sup>8</sup> This crime type has been particularly affected by changes in crime recording introduced 2023

<sup>9</sup> To be validated by MoJ

## Ward Crime and ASB rates

The following tables provide recorded crime and anti-social behaviour rates per 1,000 population for Warrington Police beats. Data sourced from Cheshire Constabulary. The inner wards of Warrington continue to have higher rates of crime and anti-social behaviour.

### 1). Crime

Police Beat	CRIME VOLUMES		CRIME RATE PER 1,000
	Recorded Crime 2023	%	
Appleton	303	2%	29.7
Bewsey And Whitecross (inc. Town Centre beat)	3762	24%	256.2
Birchwood	810	5%	78.3
Burtonwood And Winwick	651	4%	102.9
Culcheth Glazebury And Croft	632	4%	54.0
Fairfield And Howley	1634	10%	108.2
Grappenhall And Thelwall	187	1%	19.3
Great Sankey North	114	1%	18.8
Great Sankey South	455	3%	43.6
Hatton Stretton And Walton	199	1%	63.1
Latchford East	903	6%	92.2
Latchford West	656	4%	68.5
Lymm	475	3%	37.5
Orford	1054	7%	100.2
Penketh And Cuedley	233	1%	28.4
Poplars And Hulme	1001	6%	91.4
Poulton North	697	4%	68.7
Poulton South	253	2%	37.7
Rixton And Woolston	523	3%	59.2
Stockton Heath	262	2%	42.6
Westbrook	347	2%	51.9
Whittle Hall	697	4%	45.7
<b>Grand Total</b>	<b>15848</b>	<b>100%</b>	
<b>Percentage</b>	<b>100%</b>		

### 2). Anti-social behaviour

Beat	Grand Total 2023	%	ASB incident rate per 1,000 pop.
Appleton	53	3%	5.2
Bewsey And Whitecross (inc. Town Centre)	449	23%	30.6
Birchwood	106	5%	10.2
Burtonwood And Winwick	45	2%	7.1
Culcheth Glazebury And Croft	96	5%	8.2
Fairfield And Howley	174	9%	11.5
Grappenhall And Thelwall	31	2%	3.2
Great Sankey North	18	1%	3.0
Great Sankey South	55	3%	5.3
Hatton Stretton And Walton	23	1%	7.3
Latchford East	125	6%	12.8
Latchford West	67	3%	7.0
Lymm	72	4%	5.7
Orford	100	5%	9.5
Penketh And Cuedley	37	2%	4.5
Poplars And Hulme	136	7%	12.4
Poulton North	93	5%	9.2
Poulton South	38	2%	5.7
Rixton And Woolston	61	3%	6.9
Stockton Heath	17	1%	2.8
Westbrook	53	3%	7.9
Whittle Hall	132	7%	8.7
<b>Warrington</b>	<b>1981</b>	<b>100%</b>	
<b>Percentage</b>	<b>100%</b>		

## Looking forward our 2024-2027 priorities

Priority themes	Theme 1 Preventing and responding to crime and people feeling safe	Theme 2 Anti-social behaviour & public order	Theme 3 Serious Violence Duty Domestic Abuse, Stalking & Sexual Offences	Theme 4 Work together to safeguard and protect the vulnerable
<b>Priorities</b>	<ul style="list-style-type: none"> <li>▪ Integrated Offender Management, addressing root causes.</li> <li>▪ Early Help and diversionary approach to keep young people away from the criminal justice system.</li> <li>▪ Safer streets and community engagement through Co-ordinated Partnership Engagement days.</li> <li>▪ Online crime, scams, and exploitation.</li> <li>▪ Tackling existing and new threats of Serious &amp; Organised crime, County Lines and Modern Slavery.</li> <li>▪ Support with Operation sceptor, tackling knife crime, raising awareness of risks, and engaging with our communities.</li> <li>▪ Safer Streets, Tackling Violence, abuse &amp; Intimidation and designing out crime.</li> <li>▪ PSPO Dog Control education and enforcement</li> </ul>	<ul style="list-style-type: none"> <li>▪ Early Help, prevention, and place-based initiatives.</li> <li>▪ Consistent, multi-agency coordinated problem solving.</li> <li>▪ Effective ASB case management and response by maximizing use of tools and powers. Ensuring victim focused processes.</li> <li>▪ Divert young people from persistent ASB and entering the youth justice system.</li> <li>▪ Engagement with businesses within day and nighttime economies in the Town Centre and outer areas related to youth ASB, shoplifting and alcohol related violence.</li> <li>▪ Maintain links with Contextual Safeguarding in addressing individual and placed based disruption.</li> <li>▪ Introduction of the all age drug and alcohol services in 2024. With a focus on offenders and young people</li> </ul>	<ul style="list-style-type: none"> <li>▪ Support priorities within the Cheshire SV Strategy Longer term                             <ul style="list-style-type: none"> <li>- Priority 1 Prevention</li> <li>- Priority 2 Workforce Development</li> <li>- Priority 3 Intelligence Led Practice &amp; Commissioning</li> <li>- Immediate actions</li> <li>- Early Intervention and targeted prevention work to support children at risk of involvement in serious violence.</li> <li>- Targeted work with perpetrators and victims to prevent and reduce domestic abuse related serious violence.</li> <li>- Consult with children and young people on serious violence in the town.</li> </ul> </li> <li>▪ Review DA strategy and complete a revised needs assessment by the end of 2024.</li> </ul>	<ul style="list-style-type: none"> <li>▪ Develop a multi-agency approach to ‘all age’ exploitation to protect individuals vulnerable to any form of exploitation or abuse, including loan sharks.</li> <li>▪ Engage with our communities to ensure they know how to report crime and seek support and safe spaces confidentially.</li> <li>▪ Ensure all partners are trained in safeguarding key issues and reporting processes.</li> <li>▪ Engagement and training with schools &amp; parents regarding exploitation.</li> <li>▪ Encouraging and supporting Hate Crime reporting.</li> <li>▪ Ensuring safer streets for all and research into street harassment and violence against women and girls within the town.</li> </ul>
<ul style="list-style-type: none"> <li>• Continue effective partnership working, to meet the needs of our diverse communities, emerging local threats, issues and to addressing underlying causes such as substance misuse, homelessness, mental health, vulnerabilities, and deprivation.</li> <li>• Horizon scanning - respond to emerging threats, new legislation (e.g. Police Crime Sentencing and Courts Bill, Martyn’s Law (Protect Duty), Online Safety Bill, Victims Bill and implement within CSP management arrangements. Seek out additional funding and make appropriate bids to support these priorities.</li> <li>• Review the way we collect and use data and intelligence to inform strategies, plans and reporting.</li> </ul>				
<b>Links to Cheshire Police &amp; Crime Commissioner’s Plan 2021-2024</b>	<ul style="list-style-type: none"> <li>✓ Tackle ASB, neighbourhood and property crime</li> <li>✓ Disrupt serious and organised crime</li> <li>✓ Prevent violent crime</li> <li>✓ Protect rural communities</li> <li>✓ Tackle cyber crime and online scams</li> <li>✓ Tackle business and retail crime</li> </ul>	<ul style="list-style-type: none"> <li>✓ Support victims at every stage of the process</li> <li>✓ Ensure every crime is recorded accurately</li> <li>✓ Increase ‘Action Taken’ on crime</li> <li>✓ Reduce reoffending</li> </ul>	<ul style="list-style-type: none"> <li>✓ Tackle violence against women and girls</li> <li>✓ Extend mental health support</li> <li>✓ Protect children and young people</li> <li>✓ Protect adults at-risk</li> <li>✓ Tackle hate crime and bullying</li> </ul>	

## Looking forward - what we will do and how we will measure progress.

Priority Themes	Theme 1 Preventing and responding to crime and people feel safe	Theme 2 Anti-social behaviour & public order	Theme 3 Serious Violence Duty Domestic Abuse, Stalking & Sexual Offences	Theme 4 Work together to safeguard and protect the vulnerable
Key things we will do	<ul style="list-style-type: none"> <li>▪ Review shoplifting offences, work with businesses to design out crime and develop an understanding of support available to victims and perpetrators.</li> <li>▪ Develop a Combatting Drugs Plan.</li> <li>▪ Create a Gambling Harm Reduction group from April 2024.</li> <li>▪ Continue with increased levels of referrals to substance misuse services.</li> <li>▪ Use multi-agency intelligence and powers to disrupt organised crime and county lines.</li> <li>▪ Review Warrington’s Knife Crime Plan to determine if the Serious Violence Duty will include encompass this work.</li> <li>▪ Delivery of Safer Streets projects.</li> <li>▪ Support strategies and plans, which include Modern Slavery(MS), Contextual Safeguarding and Hate Crime.</li> <li>▪ Crime prevention and intervention – raising public awareness and training about cyber-crime, fraud and scams.</li> <li>▪ Develop opportunities for community engagement, exploring working with Police, Fire and Housing Associations</li> <li>▪ Task in-depth look at online crime.</li> <li>▪ Promoting work to eradicate MS including tackling MS in supply chains and transparency statements.</li> <li>▪ Task &amp; Finish Groups to respond to emerging issues/localised issues.</li> <li>▪ Continue the Landlord engagement project to reduce fly tipping.</li> </ul>	<ul style="list-style-type: none"> <li>▪ Monitor the use of ASB tools &amp; powers (e.g. parent letters, panels, Acceptable Behaviour Contracts, Community Protection Warnings/Notices, public space protection orders).</li> <li>▪ Keep up to date PCSO, PC and professionals training regarding Youth ASB process and Trading Standards.</li> <li>▪ Maintain youth ASB links with early help and diversionary/complex youth intervention.</li> <li>▪ Training to support early opportunities for ASB/Neighbour Dispute mediation.</li> <li>▪ Develop a mediation referral process.</li> <li>▪ Work with Pan Cheshire colleagues to develop a common approach to ASB in line with ASB Tools &amp; Powers Guidance.</li> <li>▪ Continue analysis of ASB to inform:               <ul style="list-style-type: none"> <li>- Hotspot Locations</li> <li>- Task &amp; Finish groups</li> </ul> </li> <li>• Develop partnership working for off road scrambler bikes and e scooters across the Borough.</li> <li>• Continue to engagement with Warrington Youth Partnership and representative youth groups.</li> <li>• Work with Warrington and Cheshire partners to support developing Water Safety Plans and education.</li> <li>• Provide education and information on the Public Space Protection Order for Dog Control.</li> <li>• Consult on the need for renewal of the Public Space Protection Order for Alcohol</li> </ul>	<ul style="list-style-type: none"> <li>▪ Support the Cheshire SV Delivery Plan.</li> <li>▪ Provide an enhanced community support offer across the borough for male and female victims of DA.</li> <li>▪ Increase WBC emergency bed space to meet demand &amp; statutory obligations.</li> <li>▪ Embed the Safe &amp; Together model across Warrington.</li> <li>▪ Ensure a consistent response upon DA disclosure, ensuring DASH is completed to identify risk level and response. The victims voice and lived experience is central to any our response               <ul style="list-style-type: none"> <li>▪ Services to meet the needs of victims with protected characteristics.</li> </ul> </li> <li>▪ Enhance staff skills in perpetrator engagement and response as part of a whole family approach via Engage programme.</li> <li>▪ Improve understanding of the needs of older DA victims and those with care and support needs.</li> <li>▪ Ensure effective support is available for children and young people who experience abuse from parents/siblings, or teen abuse (victim &amp; perpetrators),</li> <li>▪ Engage with local GPs to improve primary care response.               <ul style="list-style-type: none"> <li>▪ Embed the complex needs programme to provide continued support for victims with complex needs in refuge accommodation.</li> </ul> </li> </ul>	<ul style="list-style-type: none"> <li>▪ Continue developing multi-agency intelligence and meeting structures to identify individuals who are potentially vulnerable to any form of abuse/exploitation.</li> <li>▪ Develop an All-Age Exploitation Strategy.</li> <li>▪ Ensure multi-agency training plans in place and delivered (PREVENT &amp; Channel training strategy, Contextual Safeguarding, Modern Slavery and Hate crime) to offer understanding of risk factors, identification, &amp; prevalent forms of exploitation. To professionals, businesses, and agencies.</li> <li>▪ Support those involved in crime and ASB on transition to adulthood (18 to 25 years).</li> <li>▪ Support and implement the Cheshire hidden harm strategy.</li> <li>▪ Promote slave-free supply chains and transparency statements.</li> <li>▪ Promote the use of anonymous ways to report crime. E.g. Crime Stoppers and seek confidential support, particularly for young people.</li> <li>▪ Promote the ASB Case review process with residents and partner agencies.</li> <li>▪ Ensure the effective delivery of operation Encompass across educational settings.</li> <li>▪ Develop a perpetrator programme for high risk/high harm offenders, including the cohort not known to statutory services.</li> </ul>

### How will we measure progress

**Performance management** – monitor volumes and benchmarking data. **Perception data** through neighbourhoods, police surveys and engagement with representative and community groups. **Outcome reporting** – evaluate projects/schemes

